



Children of Bisheh

Palo Verde Elementary School

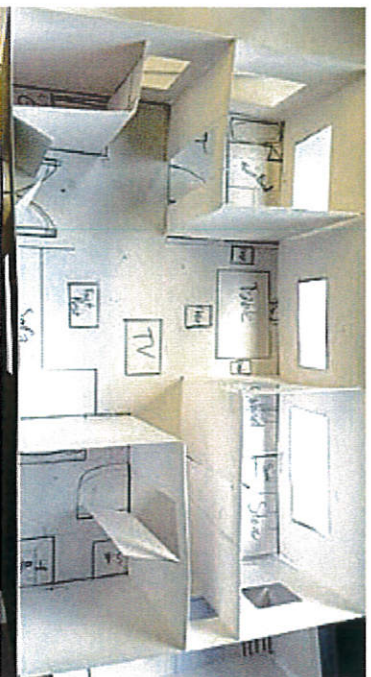
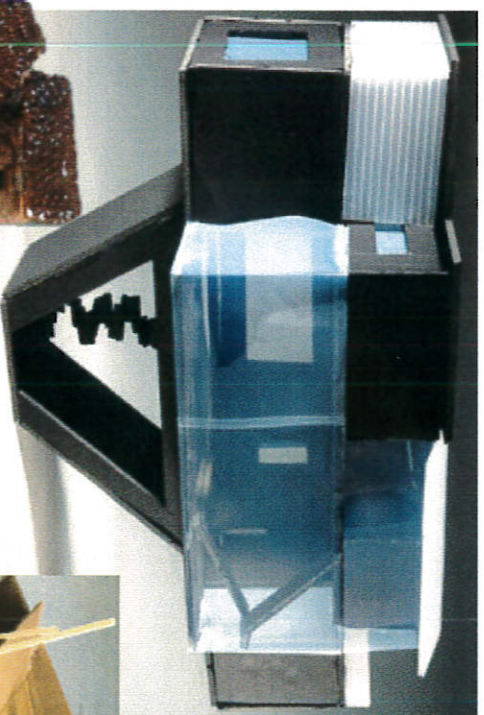
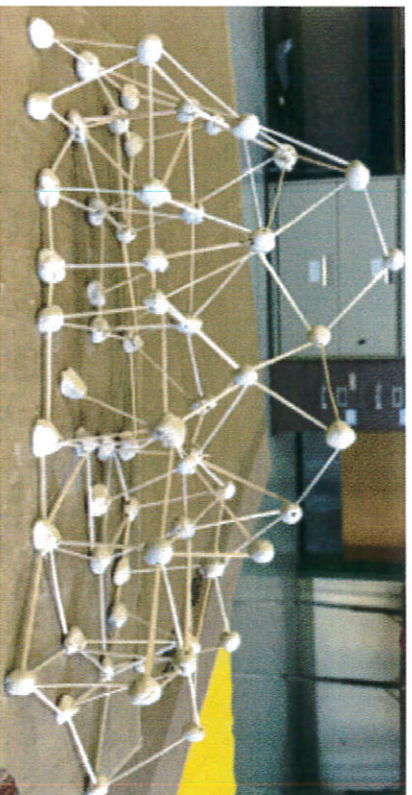
For K-5 Students

Mondays, 2:55 - 3:55 pm (K-3 students are received at 2:20)

\$375 for 15 weeks (Jan 14 - May 20)

## Creative Architecture

This course is introducing the discipline of architecture and design to kids, to nurture their talents, interests, & encourage interdisciplinary pollination of STEAM (Science, Technology, Engineering, Art, Math) topics. Children will build 3-D monuments of their designs with wide range of materials.



[www.childrenofbisheh.com](http://www.childrenofbisheh.com)

[childrenofbisheh@gmail.com](mailto:childrenofbisheh@gmail.com)

(650) 644 9104